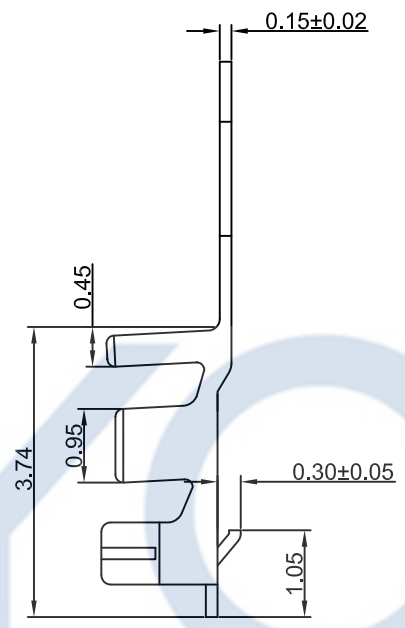
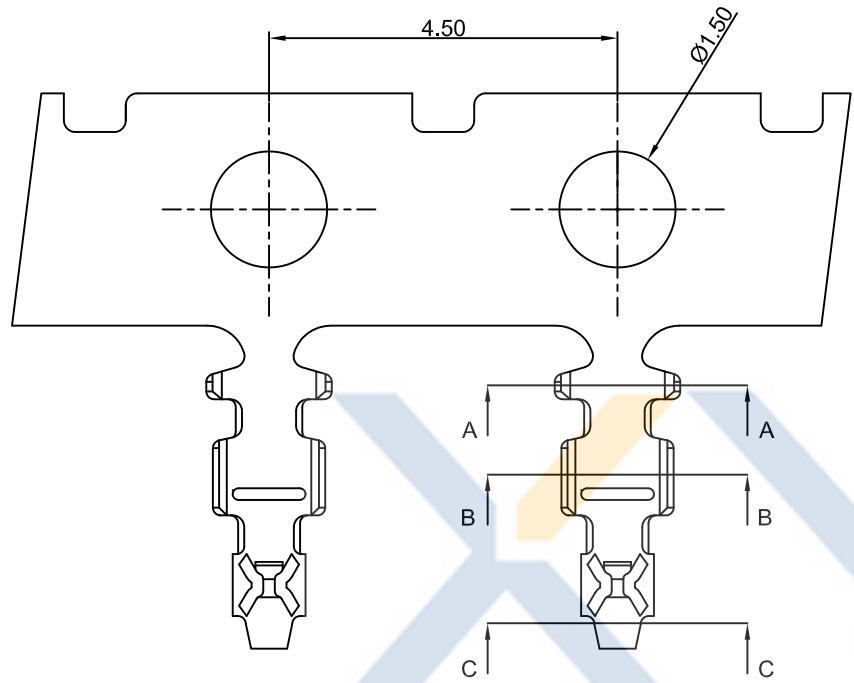


# DRAWING FOR CUSTOMER



- SPEC.:
- Rated Voltage:150V AC,DC
  - Rated Current:1A AC,DC
  - Withstand Voltage:300V AC/minute
  - Contact Resistance:30mΩ max
  - Insulation Resistance:500MΩ min
  - Temperature Range:-25℃~+85℃

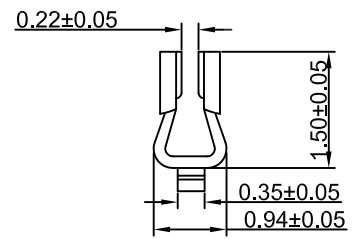
- Terminal:
- Material:Phosphor Bronze
  - Finish:Tin-plated,over Nickel
  - Applicable wire:AWG#28~32
  - QTY.:15KPCS/Reel

KB911-XXXT1B

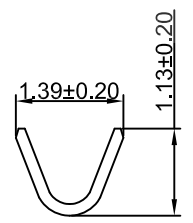
- 1:All plated
- 2:Half plated

- 0:Tin plated
- 1:Gold plated 1u"
- 2:Gold plated 3u"
- 3:Gold plated 5u"

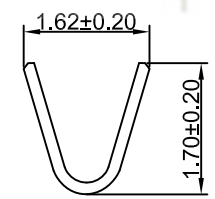
Version  
 Mold No.  
 Terminal



Section:C-C



Section:B-B



Section:A-A

Precision Connectors

**XYCO** 东莞市轩业电子科技有限公司  
 TEL: 0769-8297 9981/2/3 <http://www.XYCO.com.cn>

2015-03-20	B-1	优化产品	KB911-XXT1B	Devin	TOLERANCE 公差	DRAWING 設計者	Devin	KB911-XXT1B	
2013-07-20	B	优化产品	KB911-XXT1B	Devin	.X=±0.30 .XX=±0.20 .XXX=±0.10	CHECKED 審查	Thomas	PART NO. 料號	
DATE 日期	VER 版本	CHANGE HISTORY 變更歷史	CHANGED NAME 修改後料號	DRAWING 變更者		APPROVED 核准	William	DWG NO. 圖號	PE2804B

UNIT 單位	mm	PRODUCT NAME 產品名稱	DF13 PH1.25mm Wire To Board Terminal
------------	----	----------------------	---