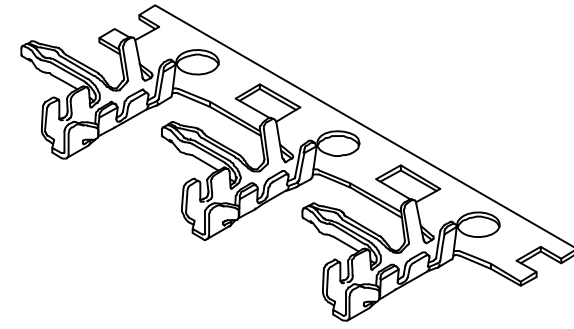
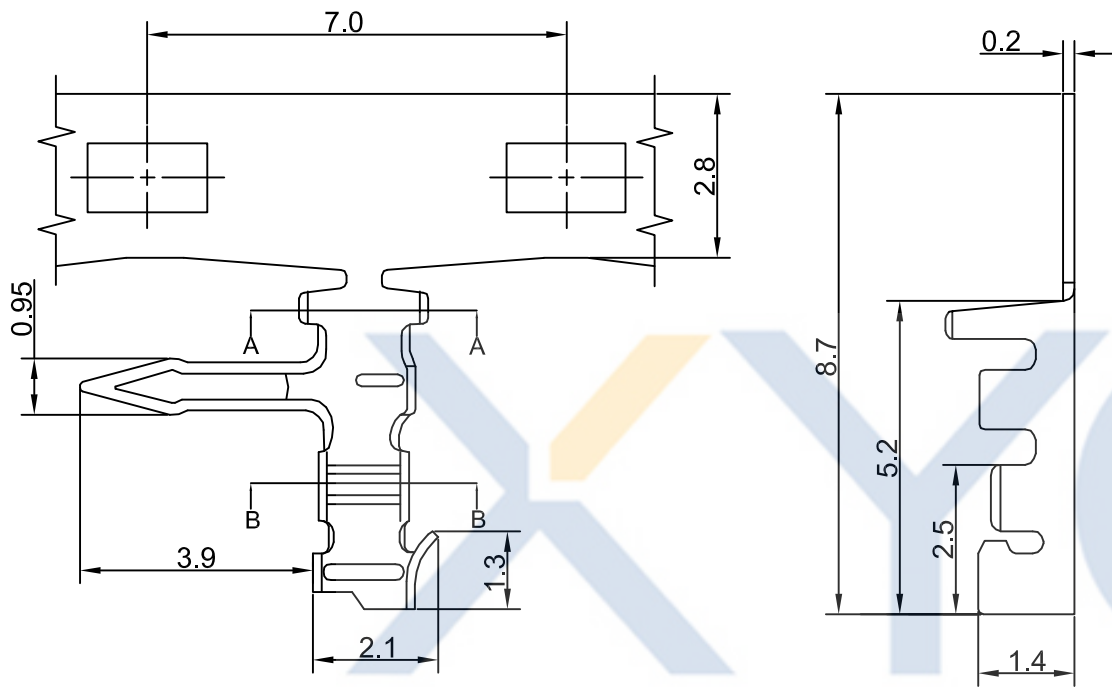


DRAWING FOR CUSTOMER



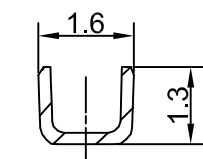
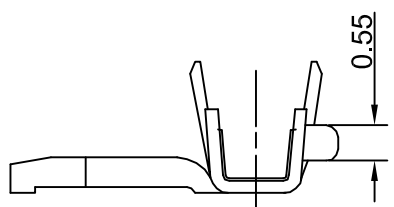
KB9314-XXT3A

1: All plated
2: Half plated

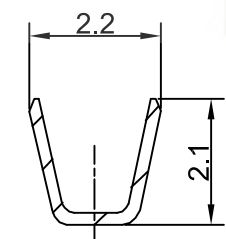
Plating
0: Tin-plat
1: Gold Plat1u"
2: Gold Plat3u"
3: Gold Plat5u"

Version
Mold No.
Terminal

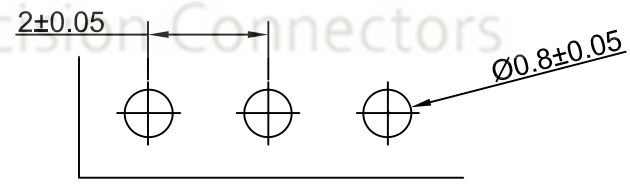
- SPEC.:
- Rated Voltage:50V AC,DC
 - Rated Current:0.7A AC,DC
 - Withstand Voltage:500V AC/minute
 - Insulation Resistance:500MΩ min
 - Temperature Range:-25℃~+85℃
- Terminal:
- Material:Phosphor Bronze
 - Finish: Tin-plated, over Nickel
 - Applicable wire:AWG#26~32
 - QTY.:11KPCS/Reel



Section:B-B



Section:A-A



P.C.B LAYOUT

				TOLERANCE 公差		DRAWING 設計者		Devin		KB9314-XXT3A		XYCO 东莞市轩业电子科技有限公司 TEL: 0769-8297 9981/2/3 http://www.XYCO.com.cn	
2015-09-20	A			.X=±0.25 .XX=±0.13 .XXX=±0.08		CHECKED 審查		Thomas		PART NO. 料號			
DATE 日期	VER 版本	CHANGE HISTORY 變更歷史	CHANGED NAME 修改後料號	DRAWING 變更者			APPROVED 核准		William		DWG NO. 圖號	mm	JC20-T Wire To Board Terminal
1	2	3	4	5	6	7	8	9					