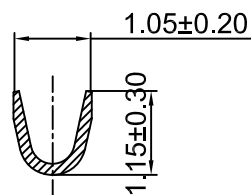
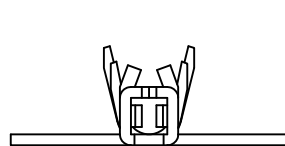
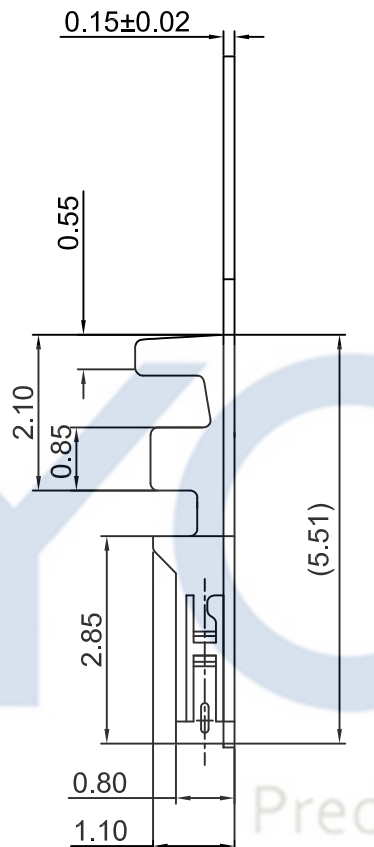
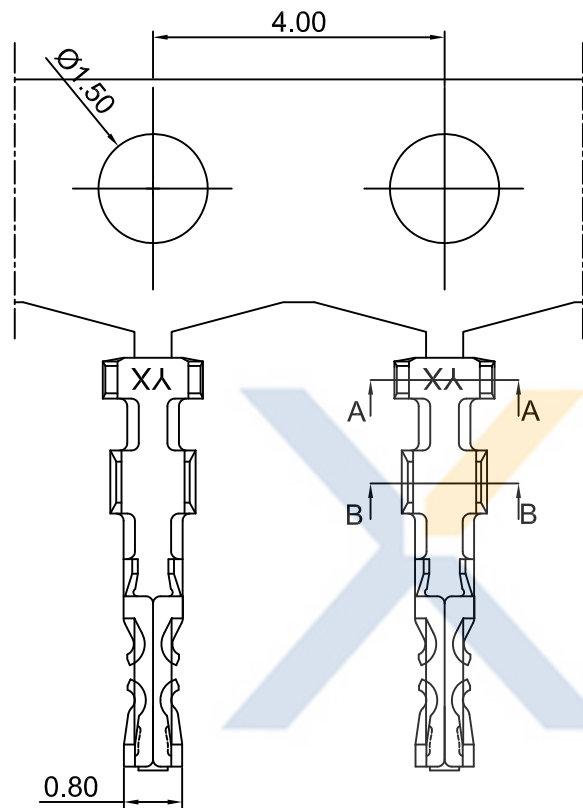
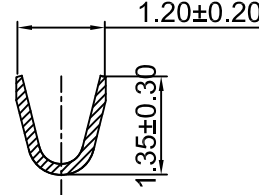


DRAWING FOR CUSTOMER



SECTION B-B



SECTION A-A

■SPEC.:

- Rated Voltage:125V AC,DC
- Rated Current:1A AC,DC
- Withstand Voltage:500V AC/minute
- Contact Resistance:30mΩ max
- Insulation Resistance:100MΩ min
- Temperature Range:-25℃~+85℃

■Terminal:

- Material:Phosphor Bronze
- Finish:Gold/Tin-plated,over Nickel
- Applicable wire:AWG#26~32
- QTY.:15KPCS/Reel

KB919-XXT1A-X

1:All plated

Plating

- 0: Tin-plat
- 1: Gold-Plat1u"
- 2: Gold-Plat3u"
- 3: Gold-Plat5u"

Logo

Version

Mold No.

Terminal

XYCO 东莞市轩业电子科技有限公司
TEL: 0769-8297 9981/2/3 <http://www.XYCO.com.cn>

				TOLERANCE 公差		DRAWING 設計者		Devin		KB919-XXT1A-X	
2020-03-15	A	新模端子	KB919-XXT1A-X	Devin	.X±0.30	CHECKED 審查	Thomas	PART NO. 料號		UNIT 單位	mm
DATE 日期	VER 版本	CHANGE HISTORY 變更歷史	CHANGED NAME 修改後料號	DRAWING 變更者	.XX±0.20	APPROVED 核准	William	DWG NO. 圖號	PE200303A	PRODUCT NAME 產品名稱	12507 PH1.25mm Wire To Board Terminal
1	2	3	4	5	6	7	8	9	10	11	12

